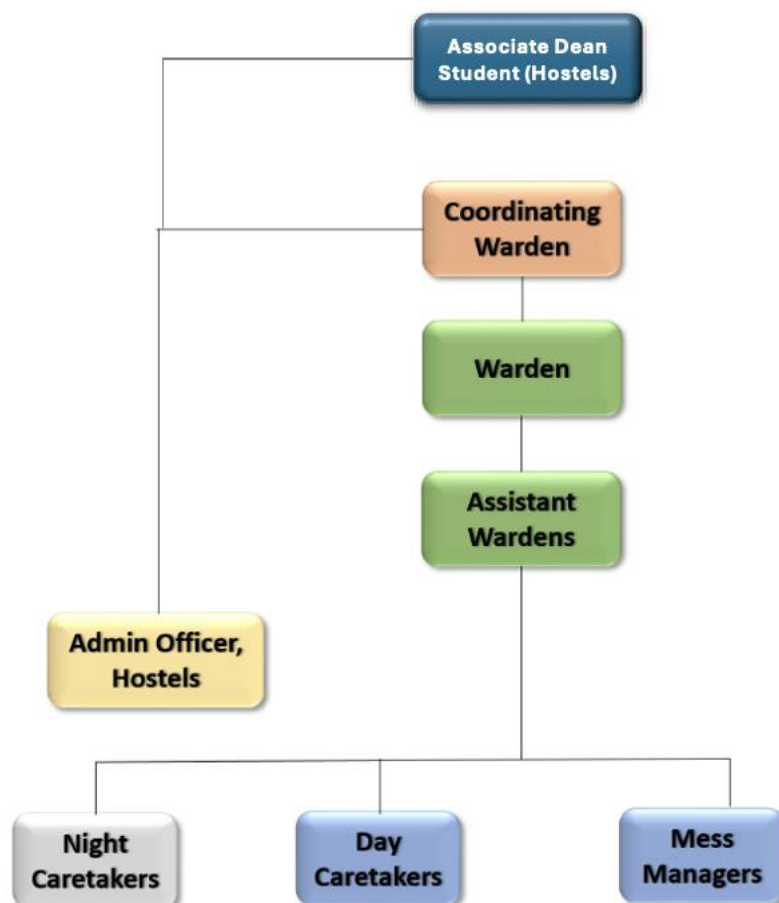


27 HOSTEL AND OTHER FACILITIES

27.1 HOSTELS

The Institute has 17 hostels (10 for boys & 7 for girls) with state-of-the-art facilities. The total hostel accommodation capacity is over for boys is over 8500 for boys and about 4,000 for girls. Most hostels also offer AC room accommodation.

Each hostel has the following administrative structure



All the hostels across the campus are managed by the Coordinating Wardens. The warden is the administrative head of each hostel. The day caretakers have the responsibility of addressing all issues related to hostel room maintenance. All mess related issues are handled by the mess manager. Medical exigency and disciplinary related issues are taken care by the Administrative Officer.

The hostels are provided with all basic facilities including water coolers fitted with water purifiers, common TV room, common reading room, common gym, laundry facility etc. Adequate dining and night canteen facilities are available in all hostels.

First Year undergraduate students will be provided shared accommodation only (on merit basis) as per details below:

Hostel (Boys) First-Year UG only (Tentative)	Type of Room	Total Seats
Ambaram Hall	Two Seater (AC/Non AC)	600

Viyat Hall	Two Seater (AC)	200
Tejas Hall	One (Non AC) Two Seater (AC)	950
Vyan Hall	Four Seater (AC) With and without Bunk beds	670

Hostel (Girls) First-Year UG only (Tentative)	Type of Room	Total Seats
Vasudha Hall (previously known as E)	Three Seater/Four Seater (AC)	180
Vasudha Hall (previously known as G)	Three Seater/Four seater (AC)	180
Ira Hall (previously known as I)	One (Non AC) Three Seater (AC)	320
Vani PG II Hostel	Two Seater (AC) 2SWST	400

Accommodation in hostels for all students UG/PG/PhD (Boys and Girls) is subject to availability.

Students coming from 50KM range of the Institute will not be eligible for any hostel facility on campus.

The hostel facility will be first made available to UG students (Boys and Girls) and available seats, if any, would be allocated to first year PG/PhD students (Boys and Girls).

NRI/Foreign students may reserve their rooms in advance.

The Students must occupy rooms specifically allotted to them. However, in exceptional cases, concerned warden may allow students to change rooms. Change of accommodation from one hostel to another during a semester/term is not permitted.

Allotment made to a student is subject to cancellation if he/she fails to occupy the room in the prescribed time. Students will also forfeit their rooms if they fail to clear their all dues to the hostel/mess by the prescribed time.

Hostel accommodation is allotted on the condition that the student agrees to abide by the rules and regulations of the hostel. A student shall be expelled from the hostel on violation of any rule and regulation laid down by the Dean Students' Office.

Any damage to hostel property will call for severe disciplinary action. In case of any violation of hostel rules, suspected unlawful activities on the basis of security risk perceived, the Warden/Coordinating Warden reserves the right to break open the rooms.

All residents of the hostel are required to avail themselves of the hostel mess services. Subscription to the mess is mandatory for every hostel inmate, and opting out of the mess facility is not permitted under any circumstances. The mess charges shall be applicable as per the prescribed rates and must be paid within the stipulated time. Both Hostel fee and Mess fee should be paid before availing the hostel facility.

27.2 HOSTEL DISCIPLINE

The hostellers are required to abide by the hostel rules laid down by the hostel administration from time to time. No student should stay away from his/her room during the night except in exceptional cases with prior written permission of the warden. Further:

- Students are advised to avoid partying, playing loud music, singing aloud, shouting or making all types of noises which are likely to distract the attention of other hostellers.
- Students are not allowed to keep powered vehicles on campus. Only bicycles are allowed.
- Entry timings at the main gate is restricted to 8:00 PM. And hostel in time is 8:30PM across all the hostels. It is mandatory for all the hostel residents to mark their attendance daily with the night caretaker. In the hostels, student attendance record is maintained
- Smoking and drinking is strictly prohibited in the hostels as well as on the campus.
- Anti-ragging and drug abuse policies are strictly practiced.
- Pets of all kinds are prohibited inside the hostels. Feeding stray dogs or cats in the hostel premises is not permitted.
- No male visitors are allowed to visit girl students in the hostel premises.
- Parents must submit the name of a local guardian for their wards.
- Students are advised not to keep large cash or valuables in their hostel room. Institute will not be responsible for any loss, whatsoever of any expensive belongings of the hostellers.

27.3 MEDICAL FACILITIES

The Institute has a well-equipped Health Centre and Ambulances. The services of the Medical Officer and the Staff Nurse are available round the clock. Further, Institute has tie-up with nearby hospitals also.

27.4 LAUNDRY SERVICES

The institute provides complimentary Laundry services to all students residing in hostels. The students have to get their Laundry cards issued to avail these services.

27.5 CANTEEN AND OTHER FACILITIES ON THE CAMPUS

- Banks - State Bank of India & ICICI Bank
- ATMS of SBI, ICICI & HDFC Banks
- Post Office
- Stationery and Book Shop
- Courier and Photocopier Booth
- Food Court/Cafeterias
- Coffee Stall
- Grocery Shop

- Amul, Verka Stall
- Fruit, Juice Stall
- Departmental/Confectionery Store
- Dry Cleaner / Laundry
- Saloon/Parlour
- Multi Cuisine Restaurants